

SABA CONSERVATION FOUNDATION LIONFISH REPORTING FORM

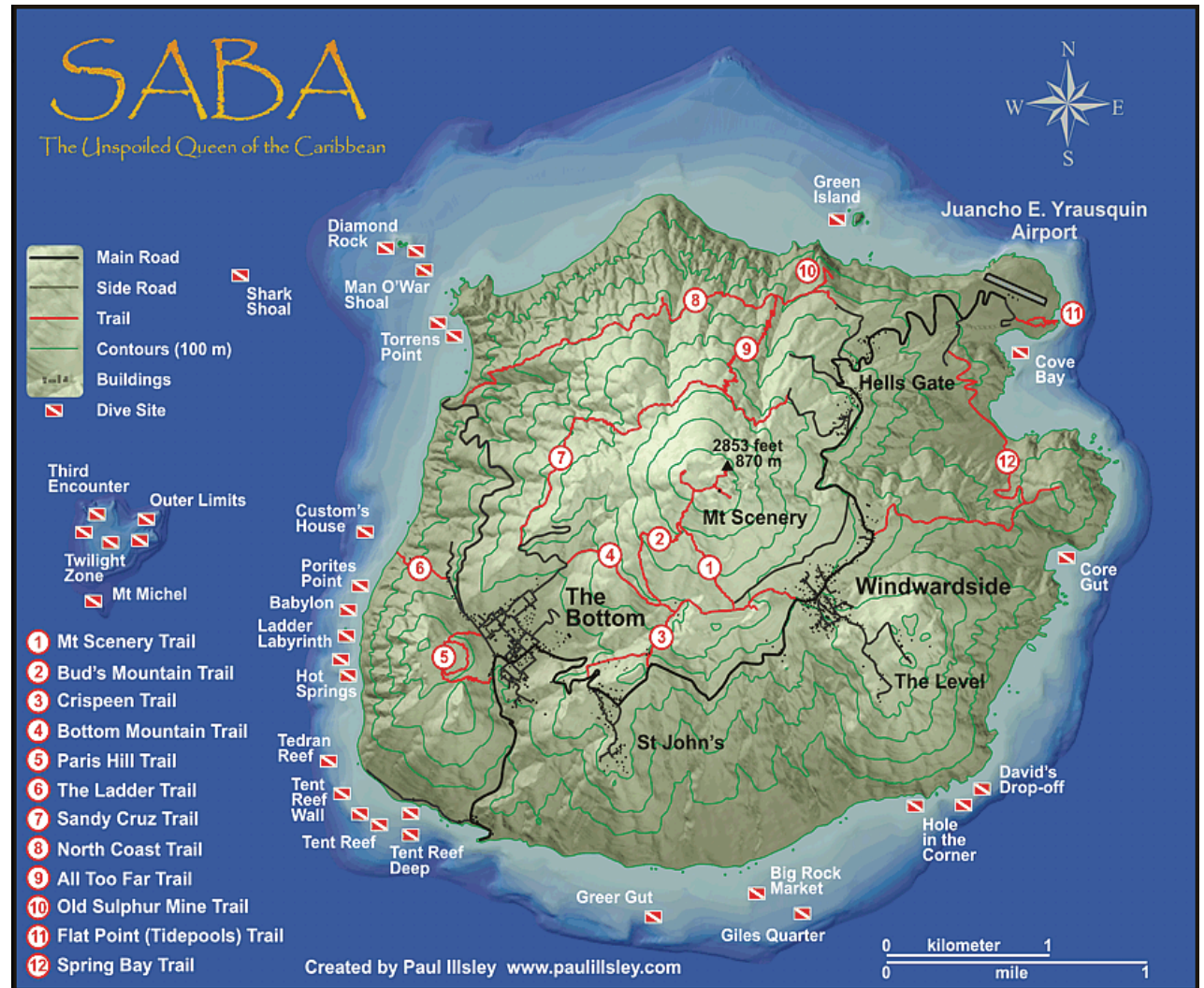


Use this form to report
all lionfish sightings
in Saba

Report Lionfish
to SCF
(+599-416-5716)



P.O. Box 18, The Bottom, Saba, Dutch Caribbean
Phone: +599 416 3295 Fax: +599 416 3435
E-mail: info@sabapark.org



What to do if you see a lionfish:

1. Mark the location with a cork streamer (available from SCF), take a GPS reading, and report the sighting IMMEDIATELY to SCF.
2. If properly trained (training available from SCF) and equipped, kill or trap lionfish, return specimen to SCF.

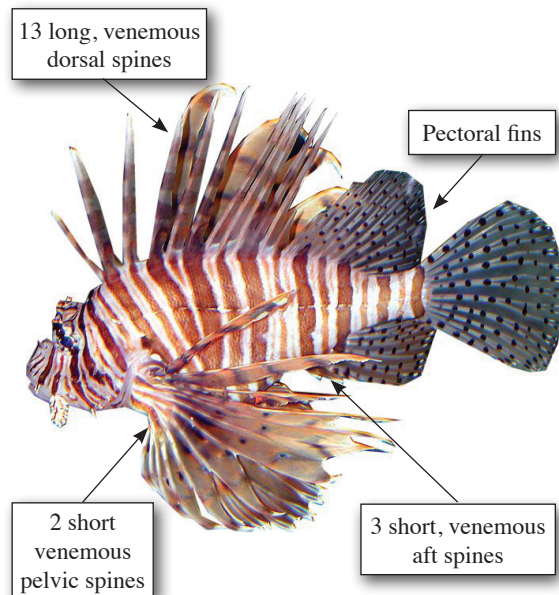
How to use this form:

1. This form is split into three sections in order of importance. All reporters should:
 - complete the "Step 1: Basic Information" section,
 - try to complete the "Step 2: Important Information",
 - fill out the "Step 3: additional Information" section if possible.
2. If GPS coordinates are not included, reporters should mark the approximate lionfish location on the map.

Lionfish Wound Care

Lionfish have venomous spines over the length of their body which can inflict a painful sting. If you are stung by a lionfish spine you should immediately run hot water over the wound for 15 to 20 minutes (as hot as you can stand but not more than 100-110 F). Repeat if pain returns.

Lionfish venom contains proteins that are denatured by heat, thus preventing them from spreading in the bloodstream. Since envenomation is painful, over-the-counter painkillers could also be taken for additional pain relief. Also seek medical attention as soon as possible.



SCF activities are funded through the support of the Dutch Postcode Lottery and the Dutch Ministry of the Interior (BZK)

STEP 1: Essential Information

Date: Reporter Name:
 Time: Observer Name:

Observer Activity (circle one): diving fishing snorkeling targeted monitoring

Location (GPS) or landmarks (be specific!):

How many lionfish: Depth (ft):

Response (circle appropriate): photo caught killed left in water on ice

STEP 2: Important Information

If caught fishing, what gear type?

Estimate fish size & numbers 0-6" 6-9" 9-12" >12"

What was the fish doing? hiding hovering swimming feeding

Habitat type (circle one): patch reef seagrass high-profile reef
 reef wall sand and rubble artificial structure

STEP 3: Additional Information (circle appropriate)

Species of interest present? Elkhorn coral Staghorn coral Nassau Grouper

Coral health: disease present Y / N Bleaching present Y / N

Marine debris: present Y / N what kind:

Comments: